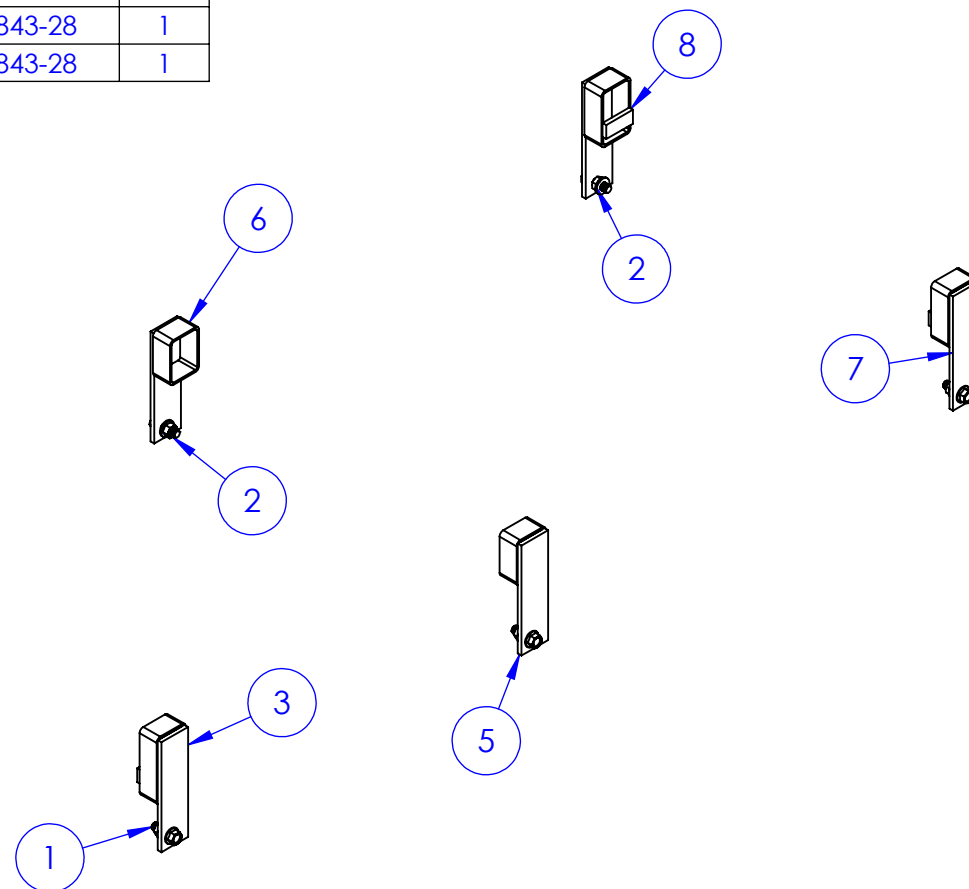
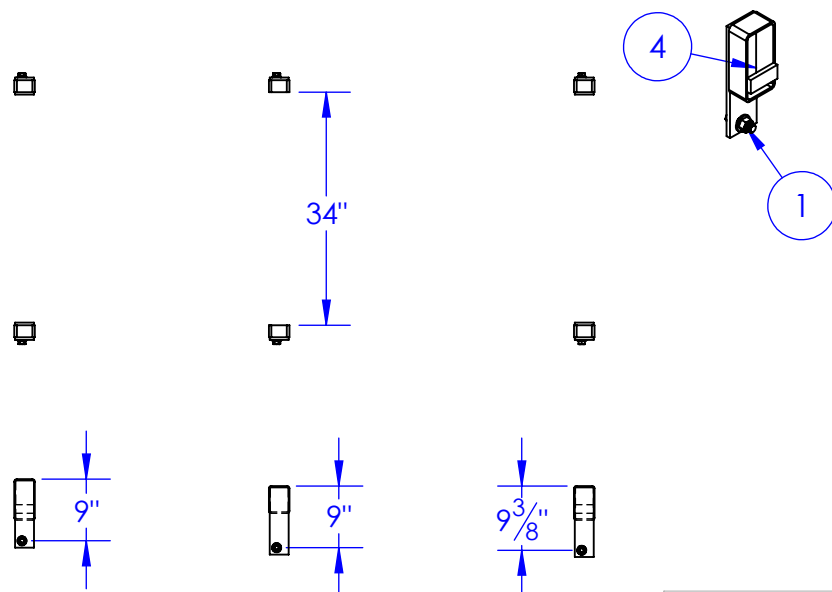


ITEM NO.	PART NUMBER	DESCRIPTION	DRAWING #	QTY.
1	BO-5/8x1-3/4 FLHCS	FLANGE HEAD BOLT 5/8x1-3/4"	STOCK	6
2	BO-5/8 HNN	LOCK NUT 5/8	STOCK	6
3	FP-FLL3-1 DS	DRIVER SIDE FLL-3 FRONT BRKT	90-1843-22	1
4	FP-FLL3-1 PS	PASSENGER SIDE FLL-3 FRONT BRKT	90-1843-22	1
5	FP-FLL3-2 DS	DRIVER SIDE FLL-3 CENTER BRKT	90-1843-24	1
6	FP-FLL3-2 PS	PASSENGER SIDE FLL-3 CENTER BRKT	90-1843-24	1
7	FP-FLL3-3 DS	DRIVER SIDE FLL-3 REAR BRKT	90-1843-28	1
8	FP-FLL3-3 PS	PASSENGER SIDE FLL-3 REAR BRKT	90-1843-28	1

REVISIONS			
REV.	DESCRIPTION	DATE	APPROVED
A	REVISED FROM DWG # 10-1846	1/22/2013	

1980-1997 FORD
40" & 56" CAB TO AXLE
SINGLE / DUAL WHEEL



PROPRIETARY AND CONFIDENTIAL
THE INFORMATION CONTAINED IN THIS
DRAWING IS THE SOLE PROPERTY OF TRIPLE
C INC. ANY REPRODUCTION IN PART OR
AS A WHOLE WITHOUT THE WRITTEN
PERMISSION OF TRIPLE C INC. IS PROHIBITED.

DIMENSIONS ARE IN INCHES TOLERANCES: FRACTIONAL $\pm 1/16$ ANGULAR: MACH ± 1 BEND \pm TWO PLACE DECIMAL ± 010 THREE PLACE DECIMAL ± 005	
MATERIAL	--
DO NOT SCALE DRAWING	

NAME	DATE
DRAWN HEATH	1/28/2013
PART # LL-FLL-3	
ASM #	
COMMENTS:	
LEVEL LOK FORD TYPE 3	

P.O. BOX 248, SABETHA, KS 66534			
TRIPLE C INC			
SIZE A	DWG. NO. 90-1843	REV. A	
SCALE: 1:28	WEIGHT: 27.24	SHEET 1 OF 1	

GENERAL INSTRUCTIONS AND CAUTIONS

Note: When welding, attach welder ground only to Hydra-Bed, not to truck frame. Use low-hydrogen rod or wire electrode. NEVER weld to the frame of the truck. Correct installation of the Level-Lok system assures Front to Rear and Side to Side leveling as well as Left to Right centering of the Hydra-Bed. Never obstruct factory overload spring mounting locations.

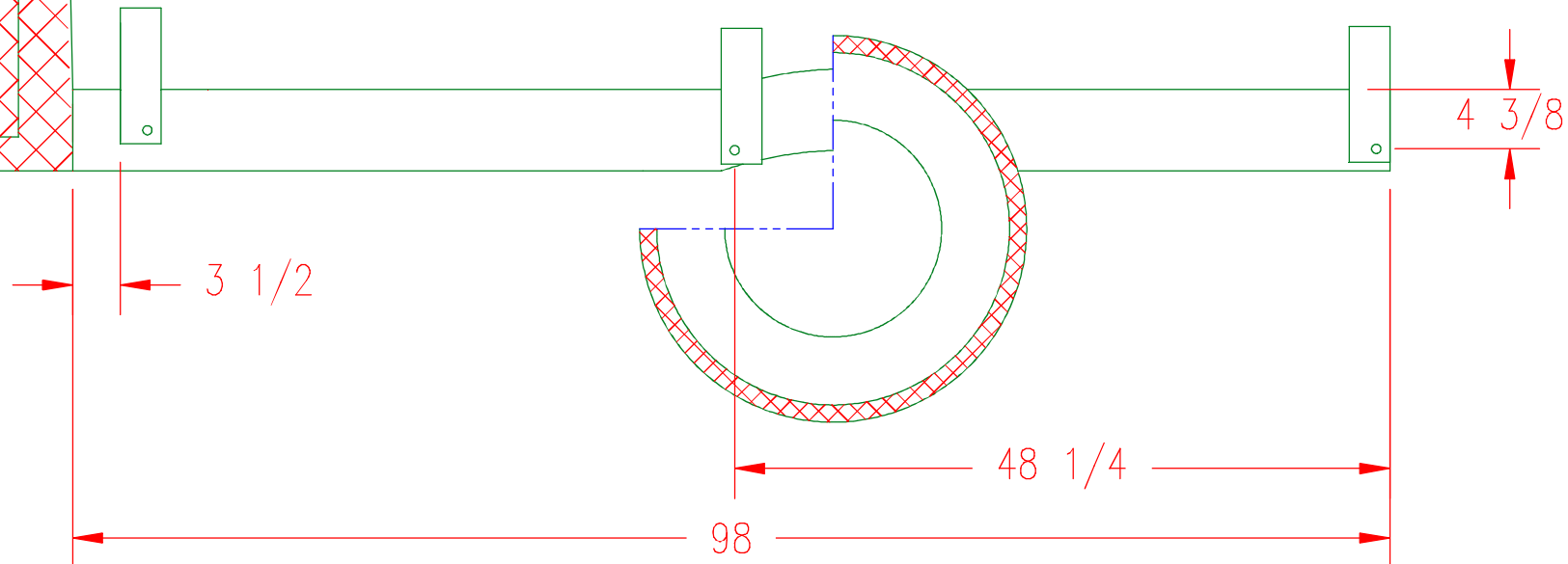
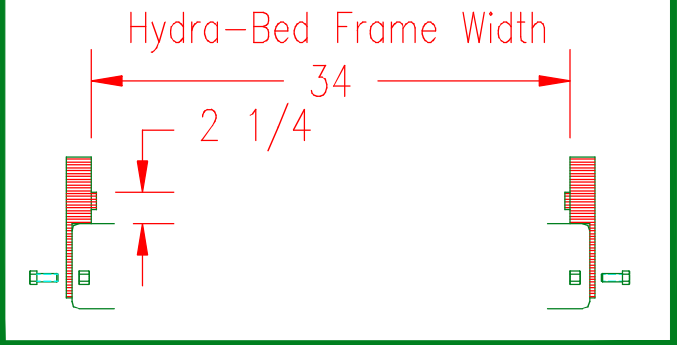
When drilling truck frame, do not damage any part of the braking, fuel or electrical systems.

Place front FLL-3 over truck frame with hole to rear. Locate front edge of FLL-3 approx $3\frac{1}{2}$ " from cab. Mark and drill $\frac{5}{8}$ " hole in truck frame.

Locate center FLL-3 over $\frac{1}{4}$ " pilot hole. Remove plastic wiring clamp, re-secure wiring harness to another location. Drill hole to $\frac{5}{8}$ ".

Locate rear FLL-3 with hole to rear, over $\frac{1}{2}$ " pilot hole. Drill hole out to $\frac{5}{8}$ ".

VIEW OF REAR LEVEL-LOK ON TRUCK FRAME



FLL-3

1980-1997 Ford
56" Cab to Axle Single/Dual Wheel